

Calico

COLORWASH

Tear Sheet



Colorwash is a suspension of light and color.



ARISE



ASCEND



DIFFUSE



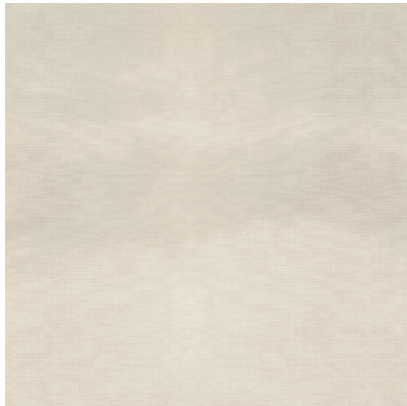
EVANESCE



EVOLVE



TRANSCEND



VANISH



WISP

Colorwash

Specifications | Commercial Substrate

Suitable for residential and commercial projects

DETAILS

Printed in panels to fit your specific space

Printed to order

Pricing available upon request

Sold by the square foot

Lead time averages 8 weeks

Rush options and custom colors available

Printed in USA

SPECS

Type II commercial-grade olefin composite substrate

Polyester/cotton woven backing

Non-repeating mural

Panels trim to 50" wide, including overlap

20 oz per linear yard (452 g per square meter)

Woven surface texture

INSTALLATION

Professional install recommended

Wallpaper comes untrimmed

TESTING

(US) ASTM E 84 class A fire rating

(EU) EN 15102 class B, s1

(CN) CAN/ULC-S102.2

CCC-W-408D type II

WA specification W-101 type II

NFPA 286 corner burn test class A

ENVIRONMENTAL

Low VOC per California CHPS 01350 air quality

Formaldehyde and heavy metal free

LEED credits eligible

PVC free

CARE

Clean with damp cloth